

System Foundation 9.0 laura User and Group

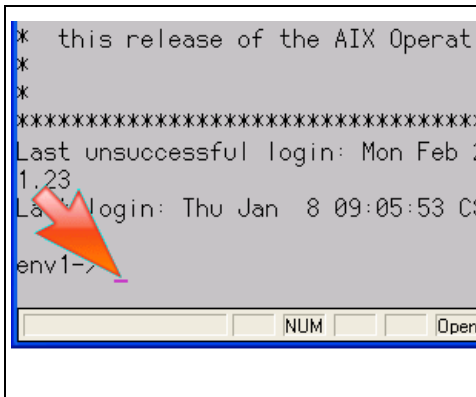
The laura Configuration File: univ.cfg

Scenario

Once the user has been established on the Operating System side (for example, in the /etc/passwd file on Unix) some configuration needs to be done on the Lawson environment side to establish which users set up on the Operating System are allowed to access Lawson. laura reads a configuration file called univ.cfg which is stored in the Lawson directory LAWDIR in the system directory in a file called univ.cfg: LAWDIR/system/univ.cfg. This scenario highlights the important parameters stored in this file.

Workflow

Step 1 of 3:



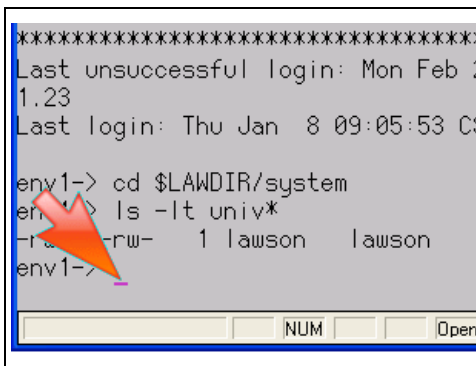
The configuration file for laura is stored in the LAWDIR system directory. To view the file to ensure that the parameters are set appropriately you must first get to the directory.

Get to the directory from a command line either in a LID (Lawson Insight Desktop) session or through lawterminal.

Action:

Type in '`cd $LAWDIR/system`' and press 'Enter'.

Step 2 of 3:



Using Lawson's text viewer to view the file.

Action:

Type in '`lashow univ.cfg`' and press 'Enter'.

Step 3 of 3:

```
univ.cfg
*
* Configuration file for Lawson Ur
LAUAUSERRNG 80 32767 /* Range of
mLAUAUSERS 2000 /* Max # of us
mUSRPRINTERS 1000 /* Max # of
LAUAMINUID 80 /* Smallest user i
mPRINTERS 2000 /* Maximum num
PRTMGR_DESC OFF /* Flag that cause
PRTMGR_HIDE ON /* Flag that cause
```

The univ.cfg file is the configuration file from which laua gathers information. The parameters in this file control which users will appear in laua. The configuration file depends on the data stored in the /etc/passwd file previously illustrated in this lesson.

The important parameters in the univ.cfg file include the LAUAUSERRNG parameter which reads a range of IDs from the /etc/passwd file. If a user's UID is not within the range established here, the user will not be available in laua. Next is the mLAUAUSERS parameter which indicates the maximum number of users read from the /etc/passwd file. Only the number of users specified here will be allowed into laua from the /etc/passwd file. The final pertinent parameter to note in the univ.cfg file is the LAUAMINUID parameter which is the smallest user ID read from the /etc/passwd file. If a user is to appear in laua their UID will need to be larger than the number specified here.

You have finished. Please click the flashing navigation icon to close this resource.